

Material Matters



Kutay Yorulmaz is Co-Founder and Interior Architect at Wangan Studio – an Istanbul-based interior architecture practice working across architecture, interiors, product, brand and experience design. With offices opening in Paris and London, the studio brings a precise material sensibility to projects across scales and geographies.

wangan.studio



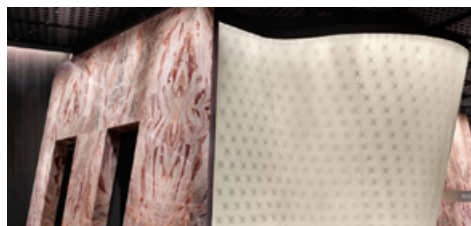
Lost-wax cast metal

There is a poetry in the ancient technique of lost-wax casting, which we are currently exploring for the central bar element in our upcoming cafe project; developed in collaboration with Mehmet Birtane – founder of Studio Birtane. By carving the initial form in wax and melting it away to make room for molten metal, the process captures a fleeting moment. For a high-interaction surface like a bar, it completely rejects the sterile precision of modern machine-milling. Instead, it yields organic imperfections that mature beautifully over time.



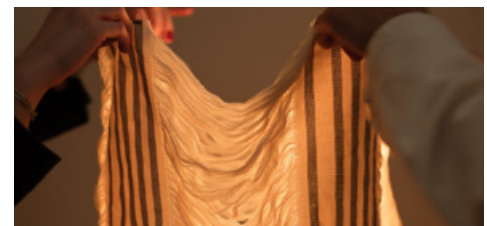
Crackle-glaze raku ceramic

There is a captivating element of unpredictability in the Raku-fired ceramics of Studio Neue. The process bypasses industrial control. Once the glazed piece is pulled glowing hot from the kiln, it is plunged into an airtight reduction chamber filled with combustible materials. The resulting thermal shock fractures the glaze, allowing the trapped smoke to bleed into the newly formed fissures. What we love about this material is that the smoke permanently inks the geography of the cooling process. It turns a static wall cladding or decorative surface into a time stamped artifact.



Cast glass blocks

Glass is often celebrated for its transparency, but we find its true power lies in its mass and ability to distort. In our recent clinic project, we explored solid cast glass blocks to construct undulating, structural volumes that redefine the traditional boundaries of clinical spaces. Moving away from standard flat glass partitions, these heavy blocks transform light into a soft, diffused glow while maintaining a sense of privacy.



Maraş Aba & Kutnu textiles

We are deeply drawn to the architectural potential of heritage crafts, which led us to deconstruct traditional Turkish woven textiles – specifically Maraş Aba and Kutnu – for a bespoke lighting installation. Rather than treating these hand-woven fabrics as upholstery, we suspended and layered them to act as light diffusers. When backlit, the dense, structural wool of the Aba and the rhythmic stripes of the Kutnu come alive. It translates historical weaving techniques into a contemporary spatial experience, catching light within the loose threads to create a warm glow that humanises large-scale interiors.